



AGRIBUSINESS PROFILE

# D&C FARMING ENTERPRISES

"CONTRIBUTING TO THE NATIONAL FOOD  
BASKET"

---

PLOT # 47A,  
MAPEPE ROAD,  
OFF KAFUE ROAD,  
CHILANGA

[www.dandcfarming.com](http://www.dandcfarming.com)

+260 975 861 558

[info@dandcfarming.com](mailto:info@dandcfarming.com)  
[ethad60@gmail.com](mailto:ethad60@gmail.com)





## Introduction

# ABOUT US

D&C Farming Enterprises Limited is a wholly-owned Zambian registered Company, registered as a business name in 2013 and incorporated as Limited Company in 2017. We specialised in agriculture production, processing and commodity trade. It was established in 2008 with the aim of driving a new era of development, growth and value addition in agribusiness.

The major focus and business model is to produce and add value to the products. Currently, the company is running a smallholding poultry farm in Chilanga, with a capacity of up to Forty Thousand (40,000) broiler chickens.

Further, the company has acquired a total of 500 hectares of land in Mpongwe and Chiyawa rejoins respectively and is so far cultivating maize on a large scale in Mpongwe and is scheduled to start cultivating soya beans and other legumes.

Envisaging the sustainable development goals to transform the world, it aligns itself strategically to goals number 1 and 12 respectively which are Zero hunger and Responsible consumption and production.

It has positioned itself to be a major player in the current agriculture-focused economy and tapping into the growing opportunities in the agric sector in line with the 7th National Development Plan. The Company's philosophy is to provide high-quality products and efficient service delivery. The steady growth in Zambia's economy and population growth has resulted in increased demand for various foodstuffs within the country and similarly in the region.

## THE BUSINESS MODEL

D&C Farming Enterprises has adopted an Inclusive Business Model which is both producer (smallholder farmers) and public (local and international markets) driven.

The model promotes the integration of smallholders' farmers into markets and links them to agricultural value chains with the underlying principle that there are mutual benefits for the bottom of the pyramid (BoPs) local farmers and the business community.

The "inclusive" element of this Business Model relates to the constraints of linking commodity-dependent smallholders' farmers and small enterprises to markets.

The "business" element relates to mainstreaming business tools and private sector approaches into agricultural development.

***The major focus and business model for D&C Farming Enterprises is to produce and add value to the products.***

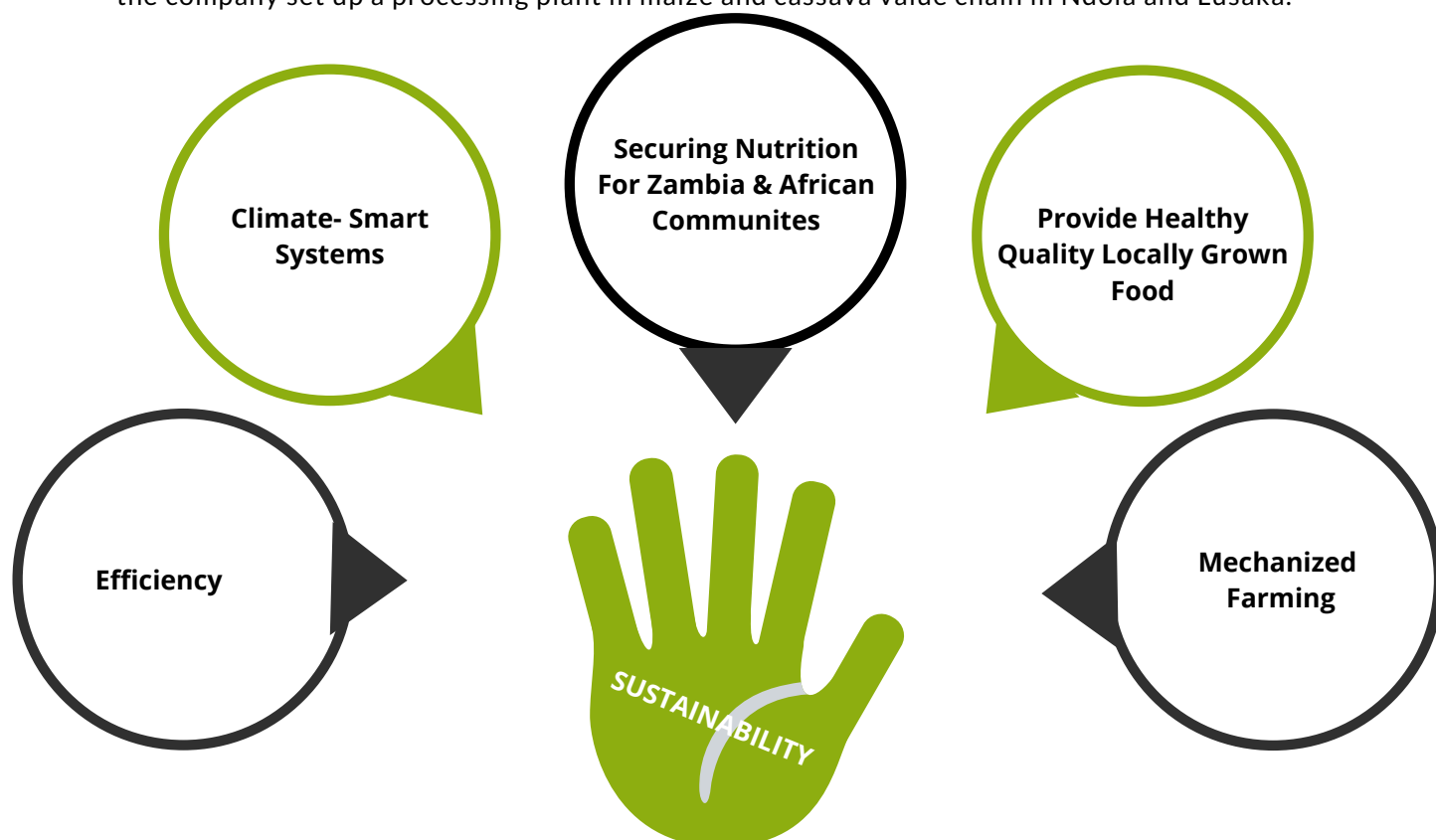


## Production

# FROM FARM TO FORK STRATEGY

D&C Farming Enterprises have adopted the farm to fork strategy for a sustainable food system and zero waste. We grow and process our products locally. We are dry millers focusing on the production of dry products like maize, soya beans and other legumes.

In its quest to add value to the agri-products, in June of 2020 it embarked on the Maize processing and value chain. This is a deliberate step to scale up into the maize value-addition value chain business model after having successfully grown and produced maize at large scale. In this regard, the company set up a processing plant in maize and cassava value chain in Ndola and Lusaka.







## VISION

To be a leading producer and processor of agri-products value chains through a sustainable food systems.

## MISSION

To produce quality agricultural products by using improved production processes, mechanised systems, technology value addition and marketing innovations for environmental and economic benefits in the Zambian and African region.

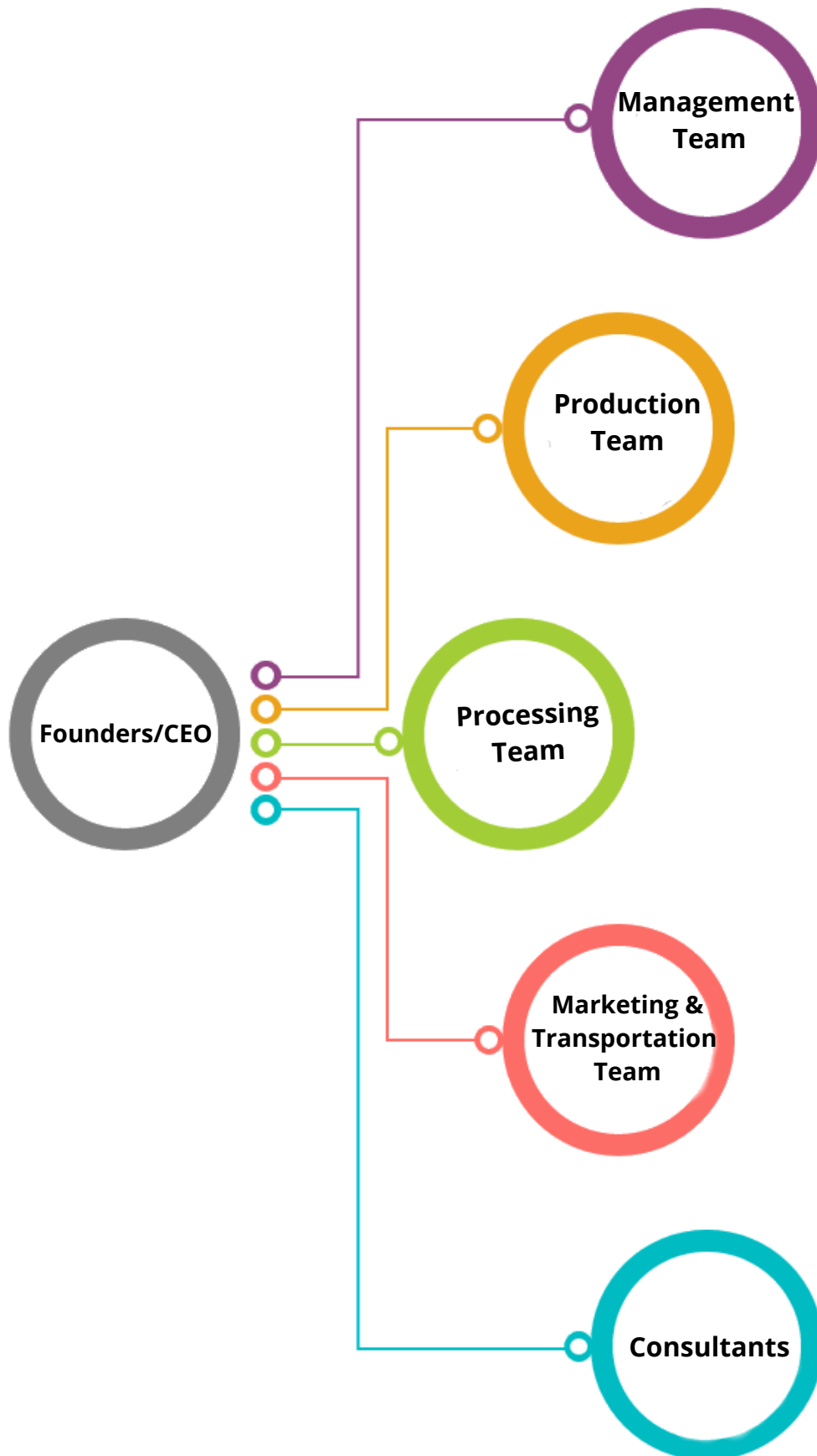
## GOAL

- To contribute to the Zambian national food basket.
- To venture into agriculture value chains and sustainable food systems.
- To develop innovative agricultural products for local & international consumption.
- To use improved crop production technologies and mechanised system for efficiency.
- To produce agricultural products that have been processed as little as possible without preservative and additives.
- To produce agricultural products with special qualities and high nutritional values.



# ORGANISATIONAL STRUCTURE

*"Nothing of greatness is achieved without a team"*





**Cassava flour**



**Broiler Chicken**



**Cereal (samp)**



**OUR  
RANGE OF  
PRODUCTS**

**Maize bran (stock feed)**



**Brewers grit**



**Flour (maize meal)**







**GALLERY**





Competitive Advantage

# MARKET ANALYSIS

D&C Farming Enterprises Limited has a competitive advantage through differentiating its operations from the competitors in the same market.



Modern mechanisation farming system.



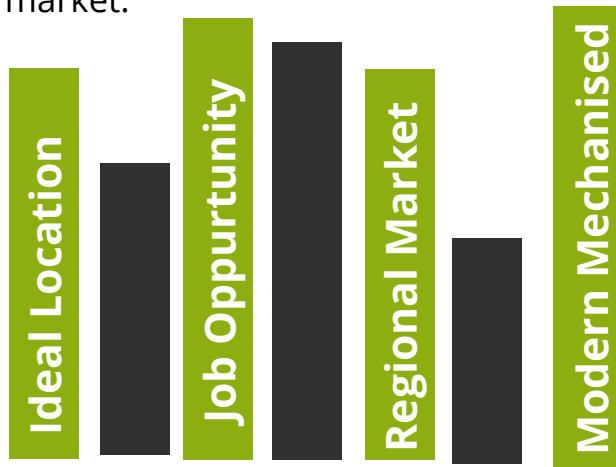
Addressing climate change. effects in its operations.



Offering attractive job opportunities.



Adding Value.



D&C Farming Enterprises Limited strategy is to add value through its farm to fork value chains.

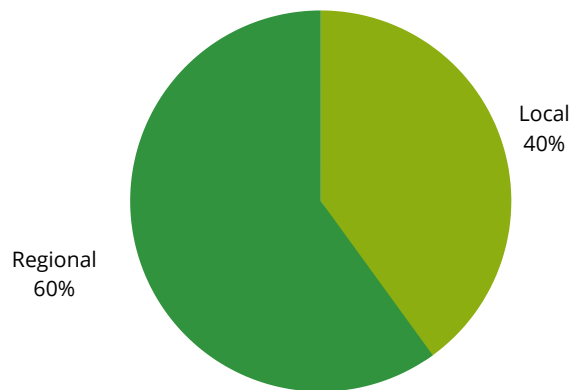
This approach is reinforced by integrating customer value and company performance.



It tailors both factors of customer-centred approach and company efficiency delivery with industry trends.



In addition, it also embraces a comprehensive approach on all fronts of production and operation.



The grain processing plant is strategically located at the heart of an upcoming industrial park right in Ndola and with very close proximity to Mpongwe farming region/ the greatest farming belt of Zambia. The location gives it easy access to the regional market as well, e.g the DRC, Angola and Zimbabwe.





# COMPLIANCE



## General Tax Clearance Certificate

TPIN: 101177945 Jurisdiction: ISMTO Lusaka Province

**Trading Name:** D & C FARMING ENTERPRISES LIMITED  
**Taxpayer Name:** D & C FARMING ENTERPRISES LIMITED  
**Physical Address:** PLOT NO.47A OFF KAFUE ROAD AAAAAA  
 Lusaka



**Province:** LUSAKA PROVINCE **Date:** 07/01/2021  
**Email:** SAM3000ZM@GMAIL.COM **Certificate Number:** 2135612904  
**Contact Number:** 0969505315

Dear Sir/Madam

### RE: TAX CLEARANCE CERTIFICATE FOR D & C FARMING ENTERPRISES LIMITED - SECTION 81B

This is to certify that D & C FARMING ENTERPRISES LIMITED trading as D & C FARMING ENTERPRISES LIMITED with TPIN 101177945 is duly registered for tax purposes.

In addition, this tax clearance certificate has been issued to D & C FARMING ENTERPRISES LIMITED trading as D & C FARMING ENTERPRISES LIMITED pursuant to section 81 B of the Income Tax Act (CAP 323).

This certificate is valid up to 31/03/2021.

Accordingly, in terms of section 81 B of the Income Tax Act, for the duration of this certificate, the above named is free to conduct business in line with the trading license held.

Please note that any established act of non-compliance with the provisions of the Income Tax Act shall invalidate this Certificate.

Yours Faithfully,

Moses Shuko  
 Commissioner - Domestic Taxes  
 Zambia Revenue Authority

**NOTE: This notice has been issued for and on behalf of the Commissioner General**

Zambia Revenue Authority Domestic Taxes Division  
 Enquiries Email: [advice@zra.org.zm](mailto:advice@zra.org.zm) Website: [www.zra.org.zm](http://www.zra.org.zm)  
 ZRA National Call Center: 4111  
 Revenue House - P.O.BOX 35710, Lusaka

Companies Form 7  
 Companies Registration No. **120180002884**  
 Serial No. **1070945**



Republic Of Zambia

## CERTIFICATE OF INCORPORATION OF COMPANY LIMITED BY SHARES

(Section 10)

**This is to certify that D & C FARMING ENTERPRISES LIMITED** is on and from the **9th day of April 2018** incorporated as a COMPANY LIMITED BY SHARES.

Given under my hand and seal at Lusaka, Zambia, this **9th day of April 2018**.



P.C. Mwaba  
 Assistant Registrar of Companies

For further details relating to this business visit  
<http://www.pacra.org.zm>







## **CONTACT US**

**+260 975 861 558**

**[info@dandcfarming.com](mailto:info@dandcfarming.com)**

**[ethad60@gmail.com](mailto:ethad60@gmail.com)**

**[www.dandcfarming.com](http://www.dandcfarming.com)**

**Plot # 47A, Mapepe Road,  
Off Kafue Road, Chilanga**